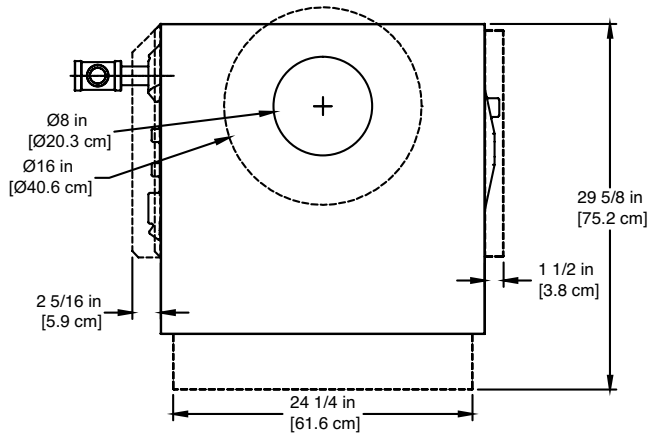


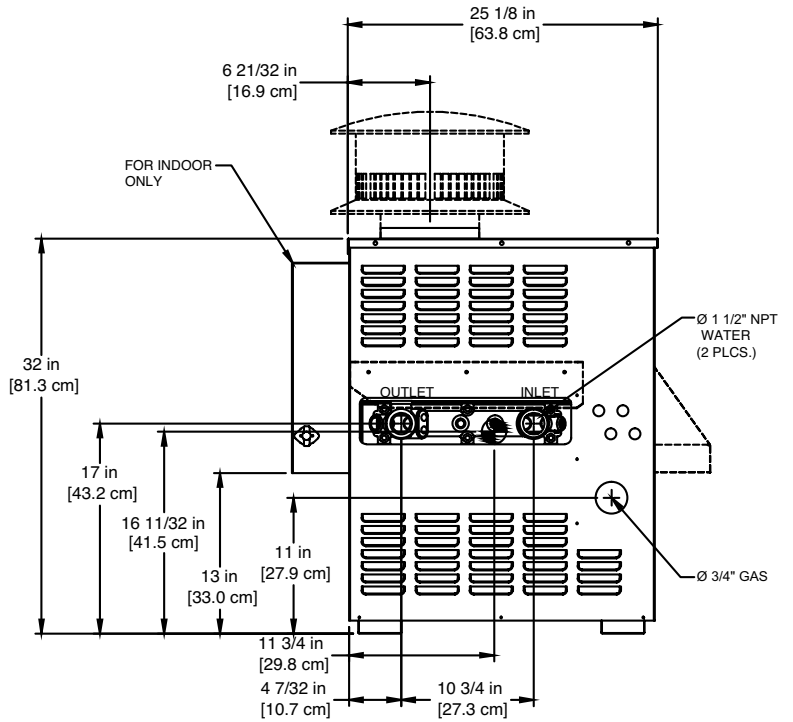
SPECTRUM 250

Category I Appliance

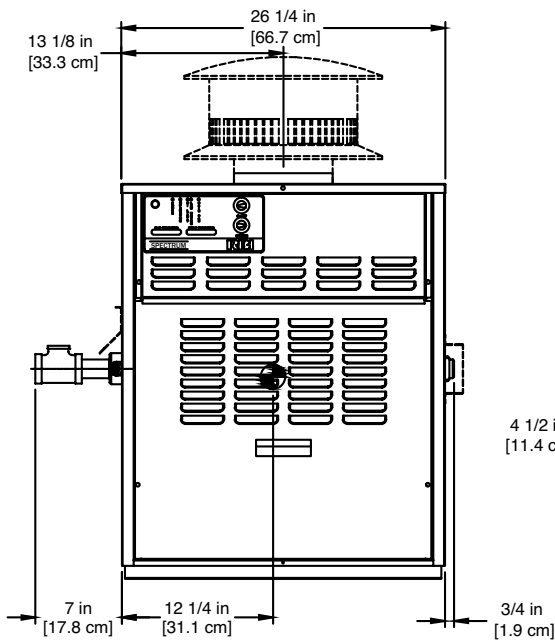
Must be vented into a negative pressure vent system.



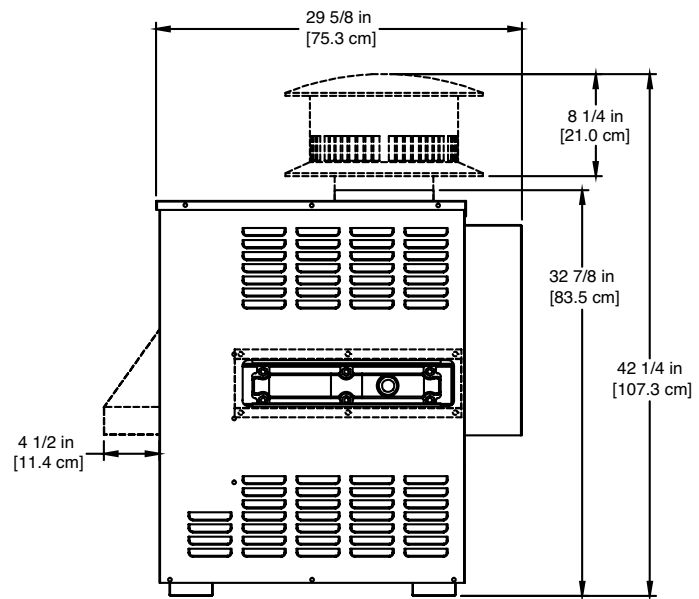
TOP



LEFT SIDE



FRONT



RIGHT SIDE

NOTE:

----- FOR OUTDOOR ONLY

RSUB-4-C

Notes:

1. Dimensions are approximate and should not be used to "rough-in" equipment.
2. Dimensions are subject to change without notice.

Spectrum 250 model available as a Water Heater Only.
Boilers & Water Heaters not available for sale in Canada due to NRCAN regulations.

SSPEC-250-10

WATER HEATER CERTIFIED RATINGS & CAPACITIES

Fuel Type	Natural/Propane Gas	Boiler FLA	1*
Input BTU/hr.	250,000 / 73 kW	Min. Gas Pressure Required	5" WC**
Output BTU/hr.	200,000 / 58.6 kW	Max. Gas Pressure Allowed	14" WC
Electrical Requirements	120VAC / 1 ph / 60 hz	Operating Weight	218 lbs. / 99 kg.

WATER HEATER TRIM & CONTROLS

Gas Valve - INT	Honeywell VR8304M 3/4"	Ignition Control (SW)	Honeywell S86IOM
Gas Valve	Honeywell VR8304Q 3/4"- 2 Stg.	Relief Valve - SW	3/4" x 3/4" set @ 125 psi
Operating Control (SW)	Honeywell - On/Off	Flow Switch	TACO
Operating Control (SW)	Jumo - 2-Stage		
High Limit (SW)	Jumo		

A.S.M.E.

ASME Sect IV Htg Surface	36.7 Sq. Ft. / 3.41 Sq. M.	Design Data	Max. 160 psig & 250°F
Water Volume	1.3 gal / 4.85 Liters		

* Add circulator amps.
** For incoming gas pressures lower than 5" WC natural or 11" WC propane, consult factory.

WATER HEATER HOURLY RECOVERY CAPACITY (GPH & LPH)

40°F	22°C	60°F	33°C	80°F	44°C	100°F	56°C	120°F	67°C	140°F	78°C
600	2269	400	1513	300	1134	240	908	200	756	171	648

Spectrum 250 model available as a Water Heater only.
Boilers & Water Heaters not available for sale in Canada due to NRCan regulations.

REP FIRM

SUBMITTED BY

JOB NAME

ARCHITECT

ENGINEER

CONTRACTOR

DATE

SPECTRUM 250

Category I Appliance

Must be vented into a negative pressure vent system.

RBI®

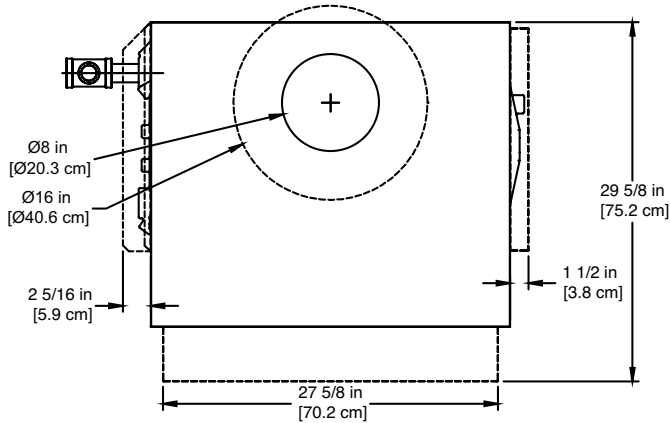
RELIABLE. BOLD. INNOVATIVE.

A Division of Mestek, Inc.
Westfield, MA 01085
(413) 568-9571

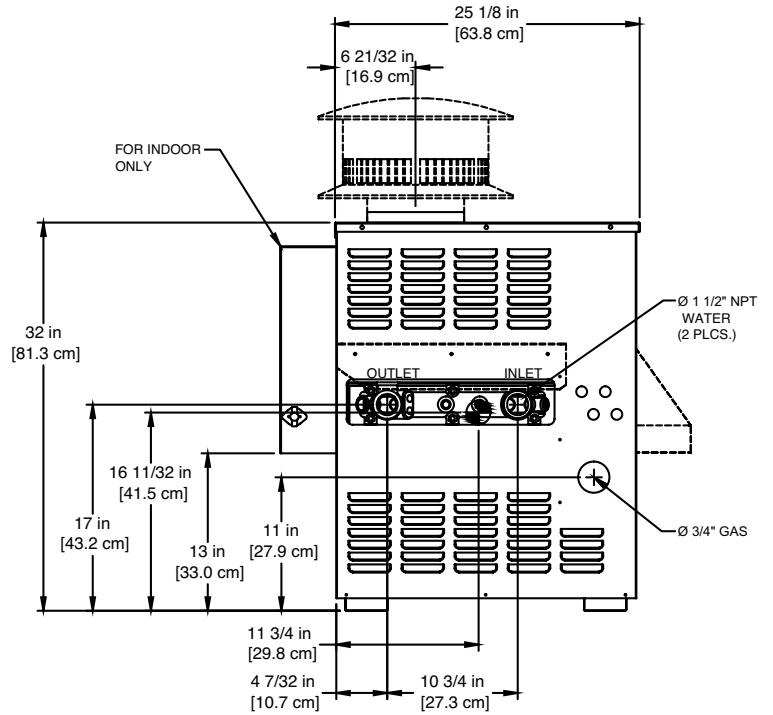
SPECTRUM 300

Category I Appliance

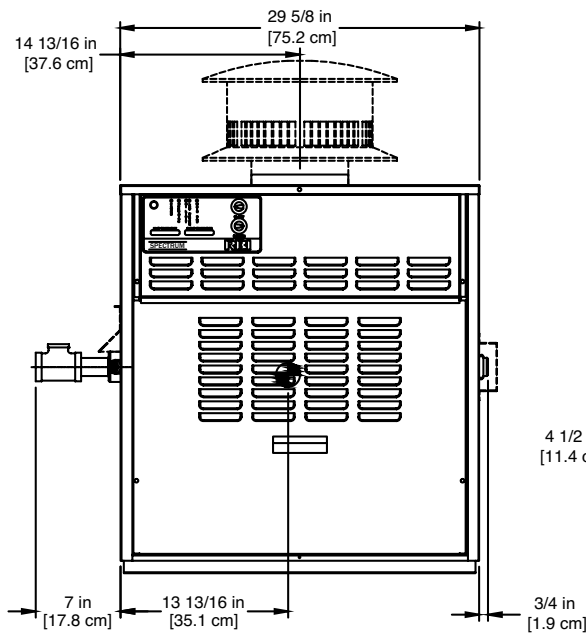
Must be vented into a negative pressure vent system.



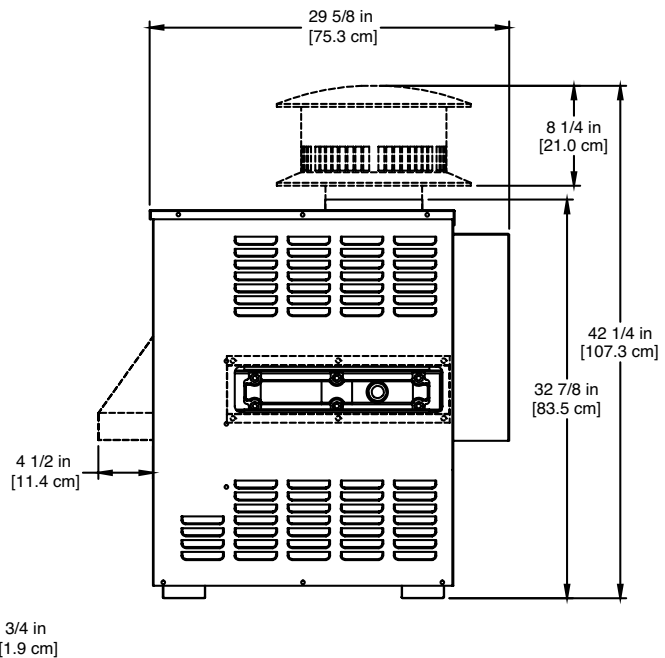
TOP



LEFT SIDE



FRONT



RIGHT SIDE

NOTE:
----- FOR OUTDOOR ONLY

RSUB-5-C

Notes:

1. Dimensions are approximate and should not be used to "rough-in" equipment.
2. Dimensions are subject to change without notice.

Boilers & Water Heaters not available for sale in Canada due to NRCan regulations.

BOILER CERTIFIED RATINGS & CAPACITIES

Fuel Type	Natural/Propane Gas	Boiler FLA	1*
Input BTU/hr.	301,000 / 88 kW	Min. Gas Pressure Required	5" WC**
Output BTU/hr.	246,820 / 72 kW	Max. Gas Pressure Allowed	14" WC
Electrical Requirements	120VAC / 1 ph / 60 hz	Operating Weight	232 lbs. / 105 kg.

BOILER / WATER HEATER TRIM & CONTROLS

Gas Valve - INT	Honeywell VR8304M 3/4"	Ignition Control (SB On/Off)	Honeywell S9361A2085
Gas Valve	Honeywell VR8304Q 3/4"- 2 Stg.	Ignition Control (SB 2 Stg.)	Honeywell S86IOM
Operating Control (SB/SW)	Honeywell - On/Off	Ignition Control (SW)	Honeywell S86IOM
Operating Control (SB/SW)	Jumo - 2-Stage	Relief Valve - SW	3/4" x 3/4" set @ 125 psi
High Limit (SB/SW)	Jumo	Relief Valve - SB	3/4" x 3/4" set @ 30 psi
		Flow Switch	TACO

A.S.M.E.

ASME Sect IV Htg Surface	42.5 Sq. Ft. / 3.95 Sq. M.	Design Data	Max. 160 psig & 250°F
Water Volume	1.4 gal / 5.11 Liters		

* Add circulator amps.

** For incoming gas pressures lower than 5" WC natural or 11" WC propane, consult factory.

BOILER TEMPERATURE RISE / PRESSURE DROP

10°F / 5.5°C				20°F / 11.1°C				30°F / 16.7°C				
Flow Rate		Pressure Drop		Flow Rate		Pressure Drop		Flow Rate		Pressure Drop		
GPM	L/s	Ft	kPa	GPM	L/s	Ft	kPa	GPM	L/s	Ft	kPa	
49.4	3.1	0.80	2.4	24.7	1.6	0.22	0.7	16.5	1.0	0.10	0.3	2 Pass
49.4†	3.1†	5.79	17.1	24.7	1.6	1.60	4.7	16.5	1.0	0.80	2.2	4 Pass

† Flow exceeds recommended maximum use a greater temperature rise or consult manufacturer.

Cupronickel heat exchanger should be considered.

WATER HEATER HOURLY RECOVERY CAPACITY (GPH & LPH)

40°F	22°C	60°F	33°C	80°F	44°C	100°F	56°C	120°F	67°C	140°F	78°C
720	2723	480	1815	360	1361	288	1089	240	908	206	778

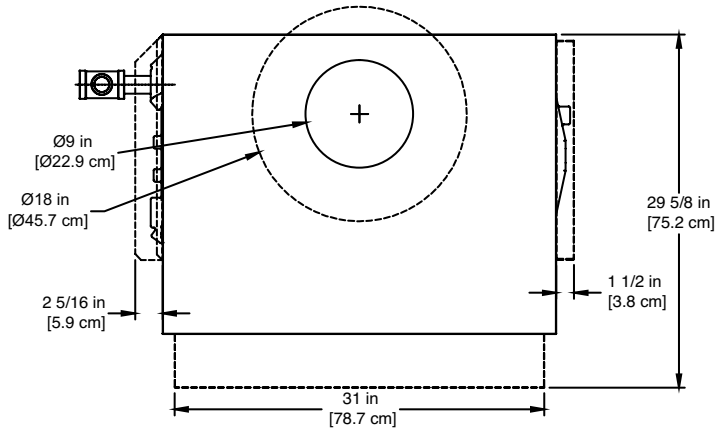
Boilers & Water Heaters not available for sale in Canada due to NRCan regulations.

REP FIRM	_____	<div style="background-color: black; color: white; padding: 10px; text-align: center;"> <h1 style="margin: 0;">SPECTRUM 300</h1> <p style="margin: 5px 0;">Category I Appliance</p> <p style="margin: 5px 0;">Must be vented into a negative pressure vent system.</p> <div style="display: flex; align-items: center; justify-content: center; margin-top: 20px;"> <div> <p>A Division of Mestek, Inc.</p> <p>Westfield, MA 01085</p> <p>(413) 568-9571</p> </div> </div> </div>
SUBMITTED BY	_____	
JOB NAME	_____	
ARCHITECT	_____	
ENGINEER	_____	
CONTRACTOR	_____	
DATE	_____	

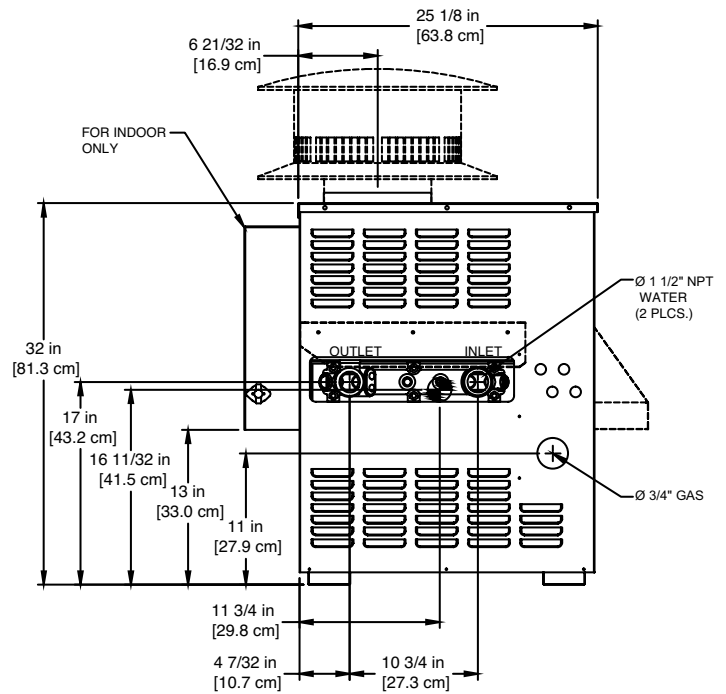
SPECTRUM 350

Category I Appliance

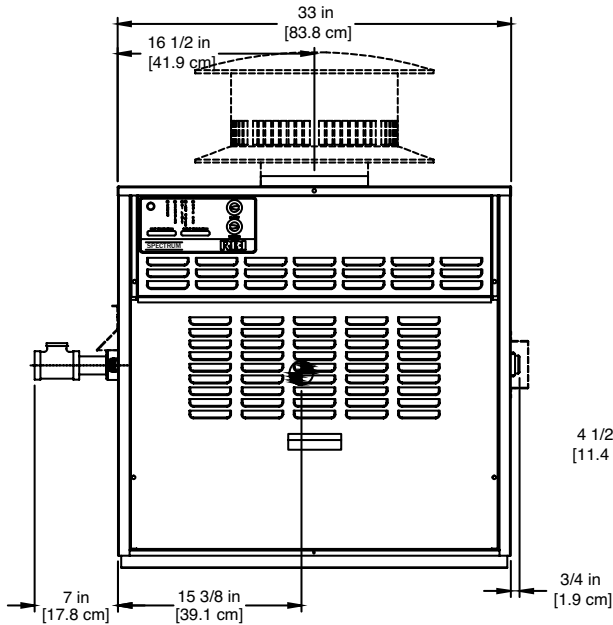
Must be vented into a negative pressure vent system.



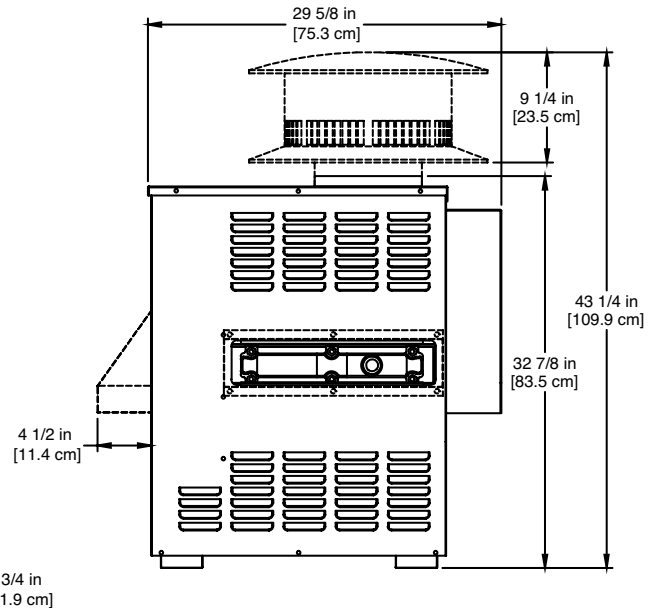
TOP



LEFT SIDE



FRONT



RIGHT SIDE

NOTE:

----- FOR OUTDOOR ONLY

RSUB-6-C

Notes:

1. Dimensions are approximate and should not be used to "rough-in" equipment.
2. Dimensions are subject to change without notice.

Boilers & Water Heaters not available for sale in Canada due to NRCAN regulations.

SSPEC-350-10

BOILER CERTIFIED RATINGS & CAPACITIES

Fuel Type	Natural/Propane Gas	Boiler FLA	1*
Input BTU/hr.	350,000 / 103 kW	Min. Gas Pressure Required	5" WC**
Output BTU/hr.	285,600 / 84 kW	Max. Gas Pressure Allowed	14" WC
Electrical Requirements	120VAC / 1 ph / 60 hz	Operating Weight	252 lbs. / 114 kg.

BOILER / WATER HEATER TRIM & CONTROLS

Gas Valve - INT	Honeywell VR8304M 3/4"	Ignition Control (SB On/Off)	Honeywell S9361A2085
Gas Valve	Honeywell VR8304Q 3/4"- 2 Stg.	Ignition Control (SB 2 Stg.)	Honeywell S86IOM
Operating Control (SB/SW)	Honeywell - On/Off	Ignition Control (SW)	Honeywell S86IOM
Operating Control (SB/SW)	Jumo 2-Stage	Relief Valve - SW	3/4" x 3/4" set @ 125 psi
High Limit (SB/SW)	Jumo	Relief Valve - SB	3/4" x 3/4" set @ 30 psi
		Flow Switch	TACO

A.S.M.E.

ASME Sect IV Htg Surface	48.5 Sq. Ft. / 4.50 Sq. M.	Design Data	Max. 160 psig & 250°F
Water Volume	1.4 gal / 5.38 Liters		

* Add circulator amps.

** For incoming gas pressures lower than 5" WC natural or 11" WC propane, consult factory.

BOILER TEMPERATURE RISE / PRESSURE DROP

10°F / 5.5°C				20°F / 11.1°C				30°F / 16.7°C				
Flow Rate		Pressure Drop		Flow Rate		Pressure Drop		Flow Rate		Pressure Drop		
GPM	L/s	Ft	kPa	GPM	L/s	Ft	kPa	GPM	L/s	Ft	kPa	
57.1	3.6	1.20	3.5	28.6	1.8	0.33	1.0	19.0	1.2	0.20	0.5	2 Pass
-	-	-	-	28.6	1.8	2.39	7.0	19.0	1.2	1.10	3.3	4 Pass

WATER HEATER HOURLY RECOVERY CAPACITY (GPH & LPH)

40°F	22°C	60°F	33°C	80°F	44°C	100°F	56°C	120°F	67°C	140°F	78°C
840	3176	560	2118	420	1588	336	1271	280	1059	240	908

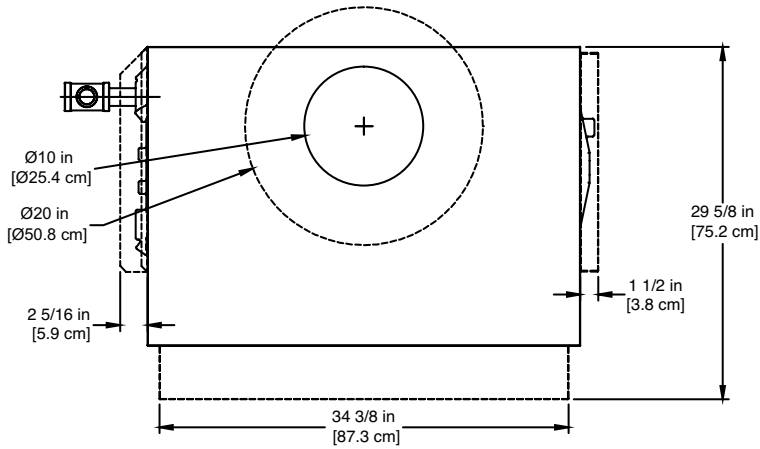
Boilers & Water Heaters not available for sale in Canada due to NRCan regulations.

REP FIRM	_____	<div>SPECTRUM 350</div> <div>Category I Appliance</div> <p>Must be vented into a negative pressure vent system.</p> <div>  <div> A Division of Mestek, Inc. Westfield, MA 01085 (413) 568-9571 </div> </div>
SUBMITTED BY	_____	
JOB NAME	_____	
ARCHITECT	_____	
ENGINEER	_____	
CONTRACTOR	_____	
DATE	_____	

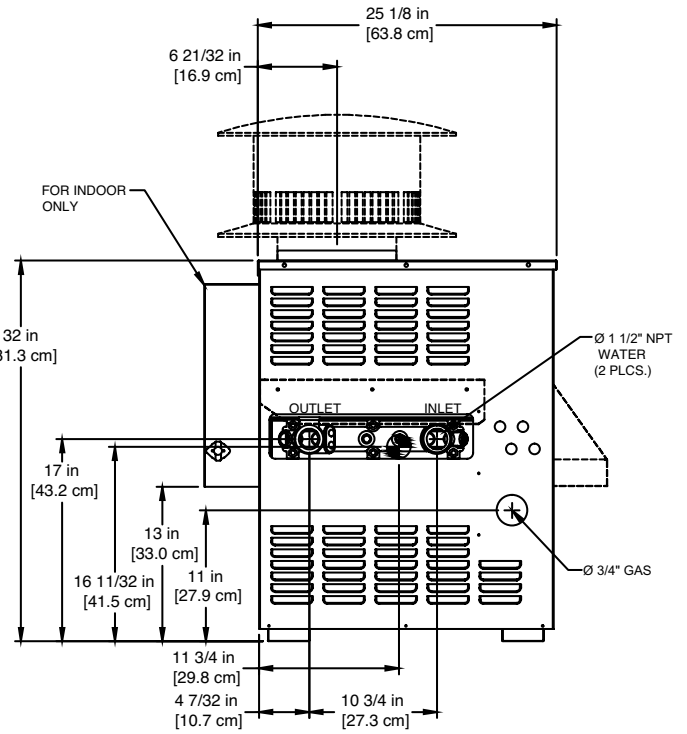
SPECTRUM 400

Category I Appliance

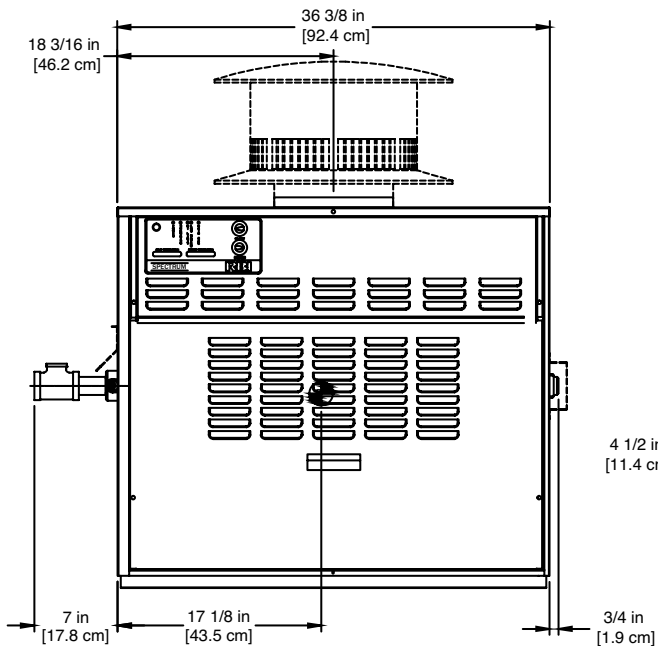
Must be vented into a negative pressure vent system.



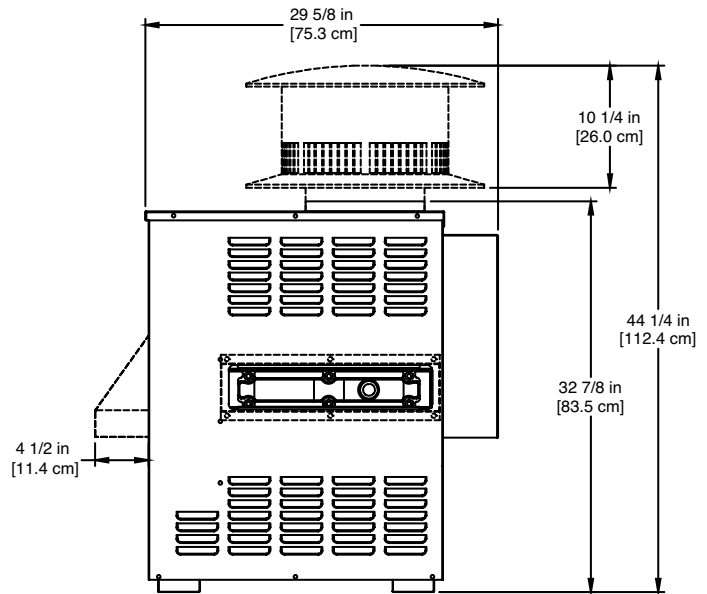
TOP



LEFT SIDE



FRONT



RIGHT SIDE

NOTE:

----- FOR OUTDOOR ONLY

RSUB-7-C

Notes:

1. Dimensions are approximate and should not be used to "rough-in" equipment.
2. Dimensions are subject to change without notice.

Boilers & Water Heaters not available for sale in Canada due to NRCan regulations.

SSPEC-400-10

BOILER CERTIFIED RATINGS & CAPACITIES

Fuel Type	Natural/Propane Gas	Boiler FLA	1*
Input BTU/hr.	399,000 / 117 kW	Min. Gas Pressure Required	5" WC**
Output BTU/hr.	323,988 / 95 kW	Max. Gas Pressure Allowed	14" WC
Electrical Requirements	120VAC / 1 ph / 60 hz	Operating Weight	264 lbs. / 120 kg.

BOILER / WATER HEATER TRIM & CONTROLS

Gas Valve - INT	Honeywell VR8304M 3/4"	Ignition Control (SB On/Off)	Honeywell S9361A2085
Gas Valve	Honeywell VR8304Q 3/4" - 2 Stg	Ignition Control (SB 2 Stg.)	Honeywell S86IOM
Operating Control (SB/SW)	Honeywell - On/Off	Ignition Control (SW)	Honeywell S86IOM
Operating Control (SB/SW)	Jumo - 2-Stage	Relief Valve - SW	3/4" x 3/4" set @ 125 psi
High Limit (SB/SW)	Jumo	Relief Valve - SB	3/4" x 3/4" set @ 30 psi
		Flow Switch	TACO

A.S.M.E.

ASME Sect IV Htg Surface	54.3 Sq. Ft. / 5.04 Sq. M.	Design Data	Max. 160 psig & 250°F
Water Volume	1.5 gal / 5.64 Liters		

* Add circulator amps.

** For incoming gas pressures lower than 5" WC natural or 11" WC propane, consult factory.

BOILER TEMPERATURE RISE / PRESSURE DROP

10°F / 5.5°C				20°F / 11.1°C				30°F / 16.7°C				
Flow Rate		Pressure Drop		Flow Rate		Pressure Drop		Flow Rate		Pressure Drop		
GPM	L/s	Ft	kPa	GPM	L/s	Ft	kPa	GPM	L/s	Ft	kPa	
64.8	4.1	1.69	5.0	32.4	2.0	0.47	1.4	21.6	1.4	0.20	0.7	
-	-	-	-	32.4	2.0	3.40	10.0	21.6	1.4	1.60	4.7	

WATER HEATER HOURLY RECOVERY CAPACITY (GPH & LPH)

40°F	22°C	60°F	33°C	80°F	44°C	100°F	56°C	120°F	67°C	140°F	78°C
960	3630	640	2420	480	1815	384	1452	320	1210	274	1037

Boilers & Water Heaters not available for sale in Canada due to NRCAN regulations.

REP FIRM	_____	<div>SPECTRUM 400</div> <div>Category I Appliance</div> <div>Must be vented into a negative pressure vent system.</div> <div>  RELIABLE. BOLD. INNOVATIVE. </div> <div>A Division of Mestek, Inc. Westfield, MA 01085 (413) 568-9571</div>
SUBMITTED BY	_____	
JOB NAME	_____	
ARCHITECT	_____	
ENGINEER	_____	
CONTRACTOR	_____	
DATE	_____	